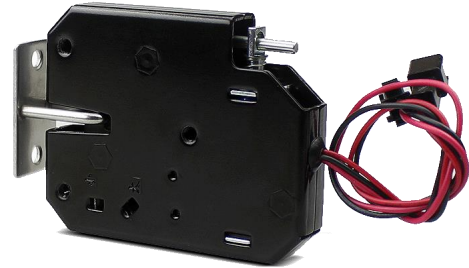


## Cabinet Lock with Auto Open (*AST-CL500 Series*)

AST-CL500 Cabinet Lock is design for Cabinets, Drawers, Display cases and Sliding Doors.

The lock provides adopt fail secure operation and also build in optional lock position contact for monitoring.



### Specifications

AST-CL500	
<b>Function</b>	
Lock Type	Fail Secure
Holding Force	150Kg
Output	Dry Contact Output
<b>General</b>	
Power Supply	DC12V / 1.5A (Not More than 3 seconds)
Working Environment	-10°C to 50°C 10% to 90% RH
Color	Metal Silver and Black
Dimensions	73mm x 58mm x 13.3mm (Body Without Cable) / 34.5x25x26mm (Mount) H x W x D

### Dimension Diagram

